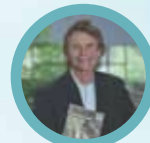


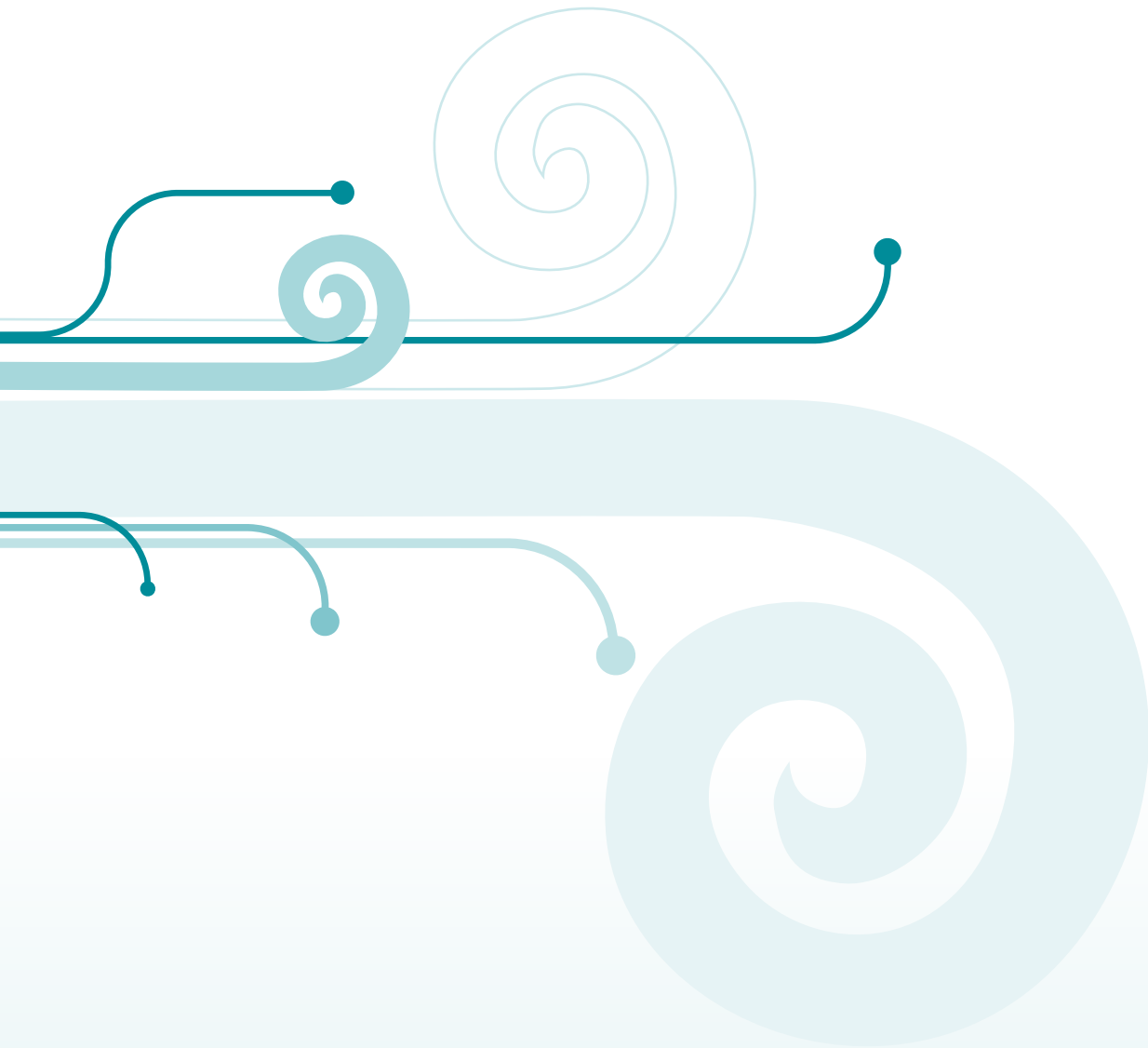
Open Polytechnic • Kuratini Tuwhera

# RESEARCH & ACADEMIC OUTPUTS

# 2009



UNDERPINNING OUR  
TEACHING & LEARNING



This document is printed on 9lives paper comprising 55% recycled content and 45% FSC Certified Pulp using vegetable based inks and water based sealers.

# CONTENTS

Research Overview 2009	2
School of Business	4
Ashish Malik	6
Kiran Sahrawat	8
School of Information and Social Sciences	10
Gary Mersham	12
Natilene Bowker	14
School of Workplace Learning and Development	16
Mike Burtenshaw	18
Catherine Ross	20
2009 Research and Academic Outputs	22

# RESEARCH OVERVIEW 2009

## RESEARCH AND DEVELOPMENT ACTIVITIES AT THE OPEN POLYTECHNIC FOCUS ON SEVERAL KEY STRANDS THAT SUPPORT OUR ACADEMIC PROGRAMMES. THESE INCLUDE RESEARCH IN THE VARIOUS DISCIPLINES, RESEARCH INTO PEDAGOGIC AND TECHNOLOGICAL APPROACHES TO OPEN AND DISTANCE LEARNING (ODL), AND VOCATIONAL AND APPLIED RESEARCH.

The Open Polytechnic continued to foster and build its research culture this year by holding two on-campus research days that offered staff the opportunity to highlight and share their research with others.

During March the School of Business hosted a symposium on sustainability and business, with a wide range of presentations that covered issues from sustainability and trade to how the Open Polytechnic can incorporate sustainability into its teaching practice. Research conducted for the symposium has already resulted in the publication of two working papers.

The Teaching Development Centre hosted a Research Day in September that covered the spectrum of research practices. Keynote presentations included research methodology, survey design, and addressing cultural issues in research.

Two academic staff from the School of Business won external acknowledgement for their research efforts this year. Dr Jonathan Barrett was awarded the best peer-reviewed conference paper at the New Zealand Applied Business Education Conference for his research on business education and the recession. Dr Vasanthi Peter's joint research with Massey University academics

on continuous employee learning processes in small manufacturing firms received the best paper award in the management education stream at the Australian and New Zealand Academy of Management conference.

Academic staff were active in publishing and presenting their discipline-based research both nationally and internationally in 2009. Conference papers were presented on subjects ranging from early childhood education to information technology, e-learning, ethnobotany and salinity intrusion, psychology and well-being, library and records management, accounting, finance, corporate governance, and ethics and management as well as aspects of the humanities and social sciences. This research was presented as far afield as Australia, the United Kingdom, the United States, South America and Europe.

The Open Polytechnic received external funding for two new research projects in 2009:

- Ngaroma Williams, Mary-Liz Broadley (Centre for Education Studies) and Keri Lawson Te Aho (Centre for Social Sciences) received a \$130,000 grant from the Ako Aotearoa National Project Fund to research the topic of building kaupapa Māori into early childhood education.
- The School of Workplace Learning & Development received \$19,200 from the Ako Aotearoa National Project Fund to work with nine other ITPs to scope a collaborative project to develop shared courseware for three construction-related National Diplomas, and ascertain how to maintain the courseware. An outcome of the project was the development of a concept case showing how all 10 ITPs can collect information in construction management, quantity surveying and architectural technology, collate that information into a single online resource downloadable by each ITP, and maintain material currency. The project is being led by the Open Polytechnic in close cooperation with the Building and Construction Industry Training Organisation.

The Open Polytechnic continued to work on two Tertiary Education Commission projects funded by the Encouraging and Supporting Innovation Fund (ESI) this year. One was a collaborative project between the Open Polytechnic and partners from the industry training sector that received funding of \$340,000 to develop an e-learning management

## The Open Polytechnic continued to foster and build its research culture this year.

system for training and development. The other project received a \$583,000 ESI grant to develop an innovative virtual network model for online mentoring and tutoring to help upskill IT professionals in the rapidly growing domain of open source software.

Other externally funded research grants that continued in 2009 included a grant from the Foundation for Research, Science and Technology (administered by the New Zealand Institute for Plant and Food Research) to Mike Burtenshaw (Natural Resources) for his research into the production and storage of kūmara and aruhe (bracken fern rhizome). This research also receives funding from the PBRF ERI fund. During 2009 Dr Gregory De Costa (Engineering and Construction) continued his research (funded by the Asia Pacific Network) into the assessment and management of change in coastal zones caused by salinity intrusion. Both Mike and Gregory presented their research findings at international conferences.

Catherine Ross (Learning Centre) continues to participate in a Massey University-led collaborative Teaching and Learning Research Initiative (TLRI) project on learning environments and student engagement with learning in tertiary settings. Liz Everiss and Dr Margaret Brennan (Centre for Education Studies) also continue their exploration of field-based early childhood teacher education in Aotearoa/New Zealand, sponsored by funding from TLRI.

Ormond Simpson, a leading international researcher in ODL, finished his tenure as a Visiting Professor at the Open Polytechnic during 2009. His mentorship to academic staff during his seven-month stay, combined with external research grants made available through the TLRI (and Ako Aotearoa towards the end of 2008), generated an increased number of ODL-related research activities at the Open Polytechnic.

Open Polytechnic research projects that received funding from Ako Aotearoa in 2008 and carried into the 2009 year included:

- Te Reo Māori Systems Translations and Processes: e-Learning in Aotearoa for the Tertiary Sector (\$29,000). Led by Cheryl Brown from the e-Learning Office, with

support from the Executive Director Māori – Tumu Herenga, Erima Henare. This joint project with Massey University was led by the Open Polytechnic and built on previous work by other institutions to enable te reo translations in the open source software Moodle. This project was completed in 2009 and the te reo language pack is now available to tertiary education organisations that use Moodle to upload.

- Augmented Reality (\$9,128) Cheryl Brown (e-Learning), Sandra Smith (Centre for Information Science), Gary Mersham (Centre for Social Sciences) and Martin Glaeser (Applied Technology) developed a concept proof for 'Enhancing learning for engineering trade students: Augmented paper based materials in course design'. The project report has now been sent to Ako Aotearoa, and information on this project has been published in the New Media Consortium's *Horizon Report*.
- Facilitated Online Study Skills Workshops for First-year Students (\$5,000). Led by Catherine Ross, this project involved a multimedia presentation about the Learning Centre's online study skills workshops StudyWise and Examwise. This presentation has now been loaded onto the Ako Aotearoa website.

Looking to 2010, Dr Gregory De Costa completed a significant amount of work this year to prepare for the Open Polytechnic's co-hosting of the 17th Congress of the Asia and Pacific Division of the International Association of Hydro-Environment Engineering and Research. This conference will be held in February 2010, and is being hosted jointly with Auckland University. Participants from 30 countries are expected to present around 200 formal papers at the four day conference.

A significant amount of work was also carried out this year on the Open Polytechnic's Research Strategy for 2010–2013. When finalised, this new Research Strategy will draw on and encompass the disciplines within Faculty and the directorates within the Polytechnic to further enhance our learning, teaching and research.

# SCHOOL OF BUSINESS



STAFF FROM THE SCHOOL OF BUSINESS CONTINUED TO CONDUCT RESEARCH TO SUPPORT THE MAJORS IN OUR BACHELOR OF BUSINESS IN AREAS INCLUDING ACCOUNTING, HUMAN RESOURCES AND MANAGEMENT. STAFF RESEARCH OUTPUTS ARE ALSO SIGNIFICANT IN TERMS OF THE PERFORMANCE-BASED RESEARCH FUND.

Whether these are nominated research outputs, peer esteem or staff contribution to the research environment, the quality of reported research has improved.

Other research focuses on open and distance learning and disciplines that, although not majors, are core courses for the Bachelor of Business – including Law and Business Ethics. An emerging focus in 2009 was to develop research on sustainability in business and teaching practices.

Two staff members completed PhDs in 2009. Senior lecturer Dr Beverley McNally completed her PhD research on how chief executives perceive their roles in leading New Zealand organisations and how this perception differs from reality. Beverley's research generated a lot of media interest – she was profiled by several daily newspapers and interviewed for television.

Centre Manager Dr Ashish Malik's PhD thesis analysed decision making in training and the strategic role training plays in the context of India's high growth business process outsourcing and information technology services sector. Ashish's work has been accepted for publication in journals and prestigious academic conferences.



Staff from the School continued to achieve recognition for their research in 2009.

Early in 2009 the School hosted a symposium on sustainability and business, for which presenters covered topics such as sustainability and accounting, and how to incorporate sustainability into teaching practices. Josephine Bourke, Dr Jonathan Barrett and Dr Vasanthi Peter have each developed their presentations into Open Polytechnic working papers. A published report on this symposium generated interest in cooperative research from researchers with other institutions.

The Sustainability Research special interest group formed as a result of the symposium provides a forum for staff interested in sustainability research to meet and discuss issues and their ongoing research projects. Sustainability was an important research focus in 2009 and will continue to be so in the future.

Staff from the School continued to achieve recognition for their research. Dr Jonathan Barrett was awarded the best peer-reviewed conference paper at the 2009 New Zealand Applied Education Conference. This is the second consecutive year that Jonathan has received this award.

Dr Vasanthi Peter's paper, co-authored with Alan Coetzer and Raja Peter from Massey University, was awarded the best paper in the management education stream at the 2009 conference of the Australian and New Zealand Academy of Management (ANZAM).

Other research outputs include a range of publications including books, refereed journal articles, Open Polytechnic Working Papers and international and national refereed conference papers. We were well represented at the ANZAM conference held in Melbourne in December 2009. Staff from the accounting area presented refereed papers at the conference of the Accounting and Finance Association of Australia and New Zealand in Adelaide in July.

Murray Smart, Nazir Awan and Richard Baxter, all from the Accounting Centre, co-authored the 4th edition of Accounting Principles, a textbook for first-year accounting students. John Veal, principal lecturer in Taxation, co-authored two editions of Staples Tax Guide.

In terms of peer esteem, staff also contributed to a variety of academic outputs including external seminars, journal editorships, paper reviews and membership of committees and boards (both internal and those associated with professional bodies and honorary roles within charitable organisations). Their contribution to the research environment is demonstrated by the numerous seminars and presentations that have been held on research methods, the use of specialist research software and fostering a positive research climate of mentoring and coaching emerging researchers.

# ASHISH MALIK

My doctoral research analysed human resource development practices in India's high-growth IT and Business Process Industry.



Fascinated by India's high growth and dynamic IT services industry, Ashish Malik, Centre Manager for the Centre for Management at the Open Polytechnic, completed his doctoral research on the subject through Victoria University of Wellington in 2009.

Originally from India, Ashish has a Bachelor of Commerce and a Master of Arts from the Tata Institute of Social Sciences, Mumbai, specialising in Personnel Management and Industrial Relations.

Before joining the Open Polytechnic in 2001 Ashish worked in industry and academia in India for about nine years. In addition to the management responsibilities of the Centre for Management, Ashish is the Discipline Leader for Human Resource Management (HRM) and has taught degree, diploma and executive programme courses in the HRM area.

Ashish was supported during his doctoral studies with funding from the Open Polytechnic's Research Growth Fund and Victoria University's doctoral students' research fund.

"My doctoral research analysed human resource development practices in India's high-growth IT and Business Process Industry, and the key factors influencing training decisions in this context," says Ashish.

"My research found that there is a complex interaction between various internal and external factors that have a strong influence on a firm's training decision making.

"The key factors included: employee turnover, client specifications, the temporal dimension of projects in their life cycle, workplace change, strategic orientation to training and complementary HRM practices and organisational capabilities."

In his analysis Ashish found that certain organisational capabilities played a role in the development of India's IT industry. Having a strategic orientation towards human resource development practices, and investing in a range of quality management methodologies and practices facilitated the development of such capabilities in firms.

Research propositions that grew out of Ashish's research will form the basis for his future research plans.

To date, the results of his research have been published in *The New Zealand Journal of Employment Relations*, *the Journal of European Industrial Training*, and *Management Research Review* (in press).

He has also presented his research findings at numerous national and international conferences such as those of the US Academy of Management, the Asian Academy of Human Resource Development, the University Forum for Human Resource Development, the Australia and New Zealand Academy of Management, the Association of Academics in Industrial Relations from Australia and New Zealand, and Labour Employment and Work conferences. Aside from his doctoral research, Ashish has research interests in HRD and HRM issues in the high-technology sectors, strategic HRD, and international employment relations.

# KIRAN SAHRAWAT

I consider myself privileged to have learning and working experience in a wide variety of education systems.



**O**pen Polytechnic Accounting senior lecturer Kiran Sahrawat, who has a Masters in accounting and a PhD in finance and banking, has taught all over the world.

She began her lecturing career at Punjab University, India, teaching in commerce, business administration and philosophy to masterate students, before heading to Kenya to teach undergraduate courses in accounting.

“After that I worked as a head of department in business studies at the Higher College of Technology in Oman, and as a visiting consultant for corporate finance at the Sultan Qaboos University,” says Kiran. “I consider myself privileged to have learning and working experience in a wide variety of education systems.

“For a number of years after my doctorate I researched activity-based cost issues and authored four text books for commerce students at intermediate and high schools in Kenya. I also published three reference books in accounting and finance and a dictionary on accounting terminology in India.”

It was while supervising postgraduate management accounting projects by MBA students in Oman that Kiran went through a shift in her research interests. What sparked her change of focus was the wave of global interest in knowledge and intellectual capital, financial reporting standards, auditing standards and the Sarbanes Oxley Act, which followed the financial disasters of firms like Enron, WorldCom, Tyco, HIH and many others.

On her arrival in New Zealand in 2001 Kiran began working in the School of Business at the Open Polytechnic as the course leader for *Accounting Theory*, and became the course leader for *Auditing* in 2005. In 2007, Kiran became a full member of the New Zealand Institute of Chartered Accountants.

Since 2001 she has published ten international refereed papers, and presented papers at six international conferences on the subjects of intellectual capital and the International Accounting Standards (IAS), as well as the International Financial Reporting Standards (IFRS).

“In terms of my current research, I am particularly interested in the rapid development of IAS and IFRS, and the way their interpretations are being perceived, understood and applied,” she says.

“Within the IAS my focus is on standards relating to financial instruments: presentation, recognition and measurement of revenue and their reporting methodologies. Currently I am working on the historical and cultural aspects of outsourcing accounting processes relevant to the above standards. This research has implications for the Open Polytechnic’s *Accounting Theory* course.

“Since I’ve come to New Zealand my other research interest and passion is the history of knowledge capital and intellectual capital measurement. I have presented papers on the subject at conferences in the United States, and Australia. I have also published papers on measuring the intellectual capital value vested in mobile mortgage managers and external auditors through value-added intellectual capital models.”

In 2009 Kiran completed and published a longitudinal empirical research study (conducted from 1999–2006) on the role of meditation in the preservation and maintenance of intellectual capital. She also completed another piece of research, *Sustaining Intellectual Capital through Meditation: Indian and Platonic Philosophies: A Theoretical Framework*. This paper will be published in the *Journal of Banking, Informational Technology and Management*, January–June 2010.

# SCHOOL OF INFORMATION AND SOCIAL SCIENCES

THE SCHOOL OF INFORMATION AND SOCIAL SCIENCES HAD A SUCCESSFUL YEAR FOR RESEARCH, EXCEEDING ITS KEY PERFORMANCE INDICATORS IN TERMS OF REFEREED RESEARCH OUTPUTS AND EXTERNAL RESEARCH INCOME.

All the six degree majors contributed to the breadth and depth of research that underpins degree teaching and extended the School's capability in strategic research focus areas such as: teaching and learning, open and distance learning, Māori and Pasifika, and vocational and applied research.

Notable successes in external research grants included the continuation of Liz Everiss and Dr Margaret Brennan's research into field-based early childhood education, sponsored by the Teaching and Learning Research Initiative (TLRI) of the Ministry of Education.

Research projects that received funding from Ako Aotearoa and were completed in 2009 included Communication's Pip Fowler's Wonderwebbers project, and Associate Professor Gary Mersham and Sandra Smith's augmented reality concept proof for engineering trades students, which was published in the New Media Consortium's *Horizon Report*.

New funding from Ako Aotearoa in 2009 included a project on building kaupapa Māori into early childhood education, by Ngaroma Williams, Mary-Liz Broadley and Keri Lawson Te Aho.

Several Information Systems and Technology staff contributed to a successful research year by authoring book chapters and refereed articles and delivering international presentations. Parwaiz Karamat presented his research into the paradigm shift in information technology at California State University, and was also invited to referee a research proposal for the Ministry of Education in Brunei.

Associate Professor Zlatko Kovacic, who was appointed Editor-in-Chief of the Interdisciplinary *Journal of Information, Knowledge, and Management* in 2009, authored a book chapter on e-governance. He also published his research in a related field and co-authored an article on the transferability of scientific and engineering concepts for publication in international journals.

Dr Elozor Shneider presented a paper titled *Designing An Intelligent Question Design Information System* at an international conference in Australia, while John Green carried out a series of 'cognitive walkthroughs' on behalf of the Second Life Education New Zealand project to determine whether students in various disciplines would be able to meet the learning objectives from the lesson plans supplied. Lalitha Jonnavithula completed her Master's thesis with Massey University on the topic of 'Improving the interfaces of online discussion forums to enhance learning support'.

Associate Professor Gary Mersham from the Communication major team made a significant contribution to the Polytechnic's research culture this year. His co-authored book *Public Relations and Communication Management: An Aotearoa/New Zealand Perspective* was published by Pearson Education. He also co-authored a book chapter on public relations in Africa and had an article on e-learning published in the *Journal of Distance Learning*.

Research highlights for the Psychology major team in 2009 included Dr Natilene Bowker's co-authorship of a book chapter on using the online medium for discursive research about people with disabilities, and Dr Kennedy McLachlan's co-authorship of a presentation on the impact of psychological flexibility and negative schemas on changes in delusional ideation over time, which was presented at an international conference in the Netherlands.

Dr Heather Peters co-authored several psychology-related research pieces this year. She was also commissioned to co-author a technical review of published research on people with autism spectrum disorder. In addition, she co-authored a conference presentation on development of a self-directed learning programme on how to implement positive reinforcement with horses (for a behaviour analysis conference), and a paper on gambling for the New Zealand Association for Behaviour Analysis conference.



All the six degree majors contributed to the breadth and depth of research that underpins degree teaching.

Aaron Jarden continued his research into positive psychology, giving a conference presentation in the United States and extending his international collaborative study into Wellbeing. Graeme Beaumont worked with researchers from the Otago University Wellington School of Medicine to develop a training package on cognitive therapy and to design a collaborative research project for the Department of Corrections, evaluating the usefulness of such training.

Dr Margaret Brennan from the Education Studies Centre was invited to contribute a book chapter to a text on human development in Aotearoa. She also delivered a paper on early childhood education at an international conference held in Romania. The International Step by Step Association conference was organised in partnership with UNICEF, and gave professionals, academics and organisations working in the field of early childhood development and education an opportunity to connect.

Other highlights for Dr Brennan this year included writing a book chapter on caring for infants for the textbook *Human Development: Family, Place and Culture*. Dr Brennan and her colleague Liz Everiss were also invited to give a presentation at the New Zealand Council for Educational Research and Ako Aotearoa Tertiary Research Colloquium on their field-based study into early childhood teacher education.

Liz Everiss's research on young children transitioning from home to more formal, home-based early childhood education services was published in a research report by the Ministry of Education's Centre of Innovation Research Initiative. She also co-authored a book chapter with former Open Polytechnic colleague Valerie Margain on tertiary assessment and student outcomes in higher education – policy, practice and research with Ako Aotearoa.

Joanne Alderson gave an international paper presentation titled *Reaching Out and Sharing The Journey – Children's Centres in the UK* at the Early Intervention Association of Aotearoa New Zealand conference on quality practices: new practices, in Auckland.

Information and Library Systems staff further developed their research into vocational and applied areas of library studies in 2009. Amanda Cossham and Jan Irvine gave a poster presentation at a LIANZA conference on the job prospects for people graduating with library diploma and undergraduate degree qualifications.

Amanda Cossham delivered a paper titled *RDA: The New Kid on the Block* at the LIANZA, CatSIG and National Library RDA workshops in Dunedin, Christchurch and Wellington. Sarah Welland discussed some of the issues records managers face in her keynote address to the second annual ALGIM records management symposium.

Alison Fields gave a presentation on writing research for publication at the ALIA Library Technicians Conference in Australia, while Shannon Wellington presented her doctoral research at Victoria University's School of Museum and Heritage Studies Postgraduate Research Seminar.

Humanities' Dr Luke Strongman presented several international conference papers in 2009. These included a presentation for the Australasian Universities Language and Literature Association at the University of Sydney, a paper on pedagogy with learning management systems for the Cambridge International Conference on Open and Distance Learning, and a paper at a UK conference supporting degree-based research at Oxford University. He also gave a presentation at a conference held at the Australian National University in Canberra on the renaissance and development of modernism. His published work for the year includes a journal article on Captain Cook's voyages and Coleridge's *Rhyme of the Ancient Mariner* in *Junctures*.

Social Sciences staff also made active contributions to the School of Information and Social Sciences' research programme during 2009. Gregory Gilbert gave a conference presentation at the Sociological Association of Aotearoa New Zealand's conference (SAANZ) at Massey University. Paula Perada also gave conference presentations on Chilean politics and the low representation of women in this field at the SAANZ conference and at an international Congress of political science in Santiago, Chile.

This report on a successful year of research for the School of information and Social Sciences would not be complete without acknowledging the leadership of the School's Dean, Dr Raymond Young, who chaired the School's Research Steering group, led the development of the School's Research Plan, chaired the Faculty Research Strategy Steering Group and the Open Polytechnic Research Committee.

# GARY MERSHAM

As a relatively small society, New Zealand can adapt and innovate quickly.



“Research often starts from identifying a gap or need in the marketplace,” says Gary Mersham, lead author of a brand new textbook, *Public Relations and Communication Management – an Aotearoa/New Zealand Perspective* (published by Pearson Higher Education).

Gary, an Associate Professor in Communication at the Open Polytechnic, has previously held professorships in Communication Science at universities in Australia, South Africa and the United States.

“When I came to New Zealand and started teaching, I recognised that there was a huge need for a textbook that properly reflected New Zealand’s unique cultural, communication and information environments. What was needed was one that covered local issues and used relevant Kiwi case studies.”

He says that at the time local teaching institutions were using American, British or Australian textbooks that completely ignored New Zealand’s cultural diversity and local and global communication challenges. As a first step towards scoping out a new textbook that would focus on local experiences, he set about researching the size and nature of the market, and invited colleagues to form a team.

“We did the research and writing in 18 months and the book became available in January 2009. Feedback to date has been good. It’s been adopted at a number of universities and polytechnics, and sales in the early months of this year were already around 1000, so we are well on track for the publisher’s target for first-year sales – a key measure of sustainability!” says Gary.

Based on current industry practice, the textbook includes the latest developments in social media, reputation management, government relations, human resource communication and communicating in cultural diversity.

“As a relatively small society, New Zealand can adapt and innovate quickly, and the communications industry here has often been at the forefront of best practice, with practitioners moving rapidly to take up, apply and test new concepts and technologies long before larger markets do. This text reflects this experience,” he says.

Aside from his overseas teaching experience, Gary has also been a Vice Dean and has chaired several research committees. In his professorial career he has authored nine books, several book chapters and over thirty peer-reviewed journal articles, and has presented papers at dozens of conferences around the world. He has experience in providing strategic counselling, research and communication training to a number of international corporate clients and local community groups.

“I came here to learn about flexible learning,” says Gary, “and there are great prospects for research. The Open Polytechnic has the opportunity to become a world leader in this area.”

Since joining the Polytechnic three years ago he says he has made a start. He has had two papers published on e-learning and its pedagogy, has hosted a forum for DEANZ, and was one of a cross-disciplinary team that acquired a small grant from Ako Aotearoa to experiment with technology that allows engineering students to view three-dimensional objects in their printed course manuals.

# NATILENE BOWKER

Cyberpsychology is particularly interesting from the Polytechnic's point of view as a distance learning provider.



**D**r Natilene Bowker's specialist research area is the emerging and interdisciplinary field of cyberpsychology – which integrates psychology, communication and media studies, and research on human–computer interaction to explain how people operate online.

Natilene joined the Open Polytechnic at the end of 2008 as a lecturer in Psychology with the School of Information and Social Sciences, teaching one of the Polytechnic's core introductory psychology courses, *Social and Individual Psychology*.

"Cyberpsychology is particularly interesting from the Polytechnic's point of view as a distance learning provider," says Natilene, "because so many of its students use the online space for communication with tutors and fellow students.

"A core theme that has dominated research in cyberpsychology is whether people behave differently online compared to offline. More recently, there is a move towards acknowledging that online worlds are simply another window on life, which may extend offline interests and ways of being in ways not previously possible."

Natilene is currently carrying out research with Cheryl Brown from the Polytechnic's Learning & Teaching Solutions directorate on how people deal with issues of self-presentation and impression management across multiple online environments for work and play.

"This is an exploratory study involving interviews with the Polytechnic's staff and others who work in e-learning-related areas and are regular users of several online environments. The research aims to understand whether self-presentation online influences self-presentation in the workplace, and vice versa.

"It also aims to explore whether engaging in multiple environments becomes complicated and taxing, and whether strategies can be identified to manage this. The findings may give further insight into people's interpretations of social versus work roles, and whether overlap occurs between these."

Natilene's previous research has focused on two specific online user groups. Her PhD project, at Massey University, looked at what it means to be online for people with physical and sensory disabilities. Findings identified how participants could access a socially valued identity through independence, participate in the world, and transcend the limitations of disabled identities, as abilities extend beyond the body. The research also highlighted how operating online can lead to disadvantages, including dependence on others and institutions for access and training, and prejudice once a person's disability was disclosed.

Her Masters project, at Victoria University, investigated the capacity of experienced chatroom users to reconstruct their social identity.

"The results from this research tended to support the idea that males were more likely than females to take advantage of identity exploration capabilities, desire a higher status position, and view rules as less necessary," says Natilene.

Her work has been published in a range of journals, from the *New Zealand Journal of Psychology* and the *Australian Journal of Rehabilitation Counselling* to *CyberPsychology and Behavior*, *Social Science Computer Review* and *Universal Access in the Information Society*.

"In the future, I hope to develop a cyberpsychology course that has an interdisciplinary flavour, to meet the needs of those working in online environments to better understand the social dynamics and pitfalls involved in online interactions."

# SCHOOL OF WORKPLACE LEARNING AND DEVELOPMENT



THE SCHOOL OF WORKPLACE LEARNING AND DEVELOPMENT, IN ASSOCIATION WITH THE LEARNING CENTRE AND THE TEACHING DEVELOPMENT CENTRE, CONTINUED TO CONCENTRATE FOCUS ON BOTH DISCIPLINE-RELATED AND OPEN AND DISTANCE LEARNING (ODL) RESEARCH IN 2009.

Underpinning the scholarship of our degrees, the School's core research efforts in the disciplines of Hydrology and Ethnobotany again resulted in presentations at international conferences and publication in the associated proceedings. This included two papers presented by Dr Gregory De Costa at the 33rd biennial congress of the International Association for Hydraulic Research and a paper presented by Mike Burtenshaw at the 50<sup>th</sup> annual meeting of the Society for Economic Botany.

Our presence on the international stage also included two papers relating to student engagement, retention and success, presented in Australia by the Learning Centre's manager, Catherine Ross. Catherine also had a paper accepted for publication in a national peer-reviewed journal. In addition she co-authored a bibliography for Ako Aotearoa on improving student engagement.




Significant external funding for the School's core research activities continued for both discipline-related and ODL research.



Dr Rick Fisher contributed to the building momentum of the School's research into ODL through his thought-provoking paper about technology and its potential to remove the distance in distance education. This paper has been accepted for publication in a national peer-reviewed journal.

Significant external funding for the School's core research activities continued for both discipline-related and ODL research. Specifically, Dr Gregory De Costa's research into salinity intrusion attracted funding from the Asia Pacific Network, and Plant and Food Research confirmed funding for Mike Burtenshaw's research on the production and storage of kūmara and aruhe (bracken fern rhizome). Catherine Ross's research activities continued to receive funding from both Ako Aotearoa and the government's Teaching and Learning Research Initiative (TLRI).

The quality of the research underpinning the teaching of our Bachelor of Engineering Technology contributed to the Institute of Professional Engineers New Zealand's decision to accredit our degree for five years. Dr Gregory De Costa's world-renowned research into salinity intrusion has resulted in the Open Polytechnic and Auckland University jointly organising a major international hydrological congress to be held in 2010.



# MIKE BURTENSCHAW

My research has  
widened my awareness  
of environmental issues.



**“***He kai na te tangata, he kai titonga kaki; he kai na tona ringa ake, tino kai, tino makona. Food obtained from another merely titillates the throat, but food gained by one’s own arm is the best and most satisfying.***”**

This Māori pēpeha (proverb or saying) expresses an important principle that has guided Mike Burtenshaw in his life and in his academic career. He studied anthropology and philosophy at Victoria University back in the late 60s before deciding to pursue a career in horticulture and enrolling in the diploma programme at Lincoln University.

On graduation he began his professional career as a gardener. He continued to study horticulture by distance through what was then the Technical Correspondence Institute – now known as the Open Polytechnic. He enjoyed the distance learning experience, and began working as a horticulture tutor for the organisation 28 years ago.

In the mid 1990s Mike wrote the Open Polytechnic’s first environment course, *Environment and Business*.

“Researching and writing this paper widened my awareness of environmental issues and confirmed my commitment to educating people about the loss of biodiversity, which I think is the major environmental issue of our time,” says Mike. He now seeks to educate others about biodiversity through teaching the Polytechnic’s *New Zealand Native Plants* and *Plants and People* courses.

Mike’s work with the late Graham Harris, an Open Polytechnic colleague, friend and mentor, led him into the field of ethnobotany. While researching Māori potatoes Graham brought back some pre-European kūmara varieties that Mike subsequently grew in his garden.

Those pre-European kūmara became part of an ongoing research project (funded via the National Centre for Advanced Bio-Protection Technologies, based at Lincoln University) to grow experimental kūmara gardens on both sides of the Cook Strait.

“The current funding, now administered through Plant and Food Research Limited, is due to end in December 2010, but I hope to apply for further funding grants to continue this and related research,” says Mike.

The research has had a number of offshoots. One of these involved looking at the role of bracken fern rhizomes as food source for pre-contact Māori. Although rich in carbohydrates, bracken fern rhizomes are not very palatable and also contain potential carcinogens. Important mentors and research associates in this study are Dr Foss Leach and Dr Janet Davison, with whom Mike has co-authored papers in the *New Zealand Journal of Archaeology*.

Another project involved building a replica subterranean storage pit (rua kūmara) and investigating the environmental conditions inside a traditional rua kūmara built by Wiremu Tawhai and others of Te Whānau o Rūtaia hapū of Te Whana –a-Apanui at Omaio in eastern Bay of Plenty. “We have engaged with many other iwi, hapū and individuals in our research and it is interacting with the people in doing the research that is most rewarding,” Mike says.

Mike has published several papers on his research, and in 2009 gave a presentation entitled *Storage Practices and Environmental Conditions in a Contemporary Traditional Māori Sweet Potato Subterranean Storage Pit (Rua Kūmara) in Aotearoa/New Zealand* at the Society of Economic Botany’s 50<sup>th</sup> meeting in Charleston, South Carolina. His work has also been published in *Archaeology in New Zealand*.

# CATHERINE ROSS

Teachers and teaching play a significant role in whether or not students engage in learning at optimum levels.



Completing her Master of Education with first class honours in Adult Education in 2005 led Catherine Ross, Manager of the Learning Centre Te Wāhanga Whakapakari Ako at the Open Polytechnic, on a fascinating journey into the world of research.

The thesis for her Masters (which won a Research Excellence award from Massey University) investigated women's informal learning within a community group setting, using grounded theory to develop a substantive theory about women's learning.

She connected with the university again last year as part of a two-year Teaching Learning and Research Initiative (TLRI) funded project into student engagement. This national project involved nine tertiary education organisations from around the country.

"The findings of this research revealed that teachers and teaching played a significant role in whether or not students engaged in learning at optimum levels," says Catherine.

"Institutional support was important, too. It was also clear that students' own motivation played a part. Students wanted to feel competent in their learning and were strongly motivated by this. A variety of non-institutional factors also impacted on students' engagement, but more moderately."

Catherine presented some of the findings of the TLRI research at the Australia New Zealand Student Services Association's conference in Brisbane in December 2009, and will present further findings at the Distance Education Association of New Zealand's conference in 2010. In addition, the Open Polytechnic will publish this research as a working paper in 2010.

Since she joined the Polytechnic, Catherine's research interests have focused on student engagement, retention and success.

"Too many students enrol in tertiary education and do not complete their courses successfully. I think it's essential that we conduct research on what the contributing factors are, so that we are better able to promote student success."

In 2008 the Learning Centre received funding from Ako Aotearoa to develop a programme of peer support for Open Polytechnic Māori and Pasifika first-year students.

"This programme was successful and has now been incorporated into the Centre's programmed activity," says Catherine.

The results of this project have been published on the Ako Aotearoa website. Catherine has also presented papers at the Enhancing Student Success conference at the University of Newcastle, New South Wales, in December 2008 and at the Higher Education Research and Development conference in Darwin in 2009. An article of hers will also be published in *Open Learning: The Journal of Open and Distance Learning* in 2010.

Catherine is now undertaking a doctorate in Education. Her research investigates the practice of learning advising.

"The work that Learning Advisers do is complex, ill defined and poorly understood; it also lacks scholarly inquiry. Such inquiry is critical if the practice is to be understood fully and best serve the interests of institutions, practitioners and students."

She has a busy year ahead of her, with a conference presentation on the peer support programme to be delivered at Singapore's Temasek Polytechnic's international conference on learning and teaching, and two further applications submitted by the Learning Centre for external funding for developing learning support initiatives for Māori students.

# 2009 RESEARCH AND ACADEMIC OUTPUTS

## ACADEMIC RESEARCH

### 1. BOOKS AND MONOGRAPHS

Mersham, G. M., Theunissen, P., & Peart, J. (2009). *Public relations and communication management: An Aotearoa/New Zealand perspective*. Auckland, New Zealand: Pearson Education.

Smart, M., Awan, N., & Baxter, R. (2009). *Accounting principles* (4th ed.), Auckland, New Zealand: Pearson Education.

Veal, J., Turner, T., & McAlister, C. (2008). *Staples tax guide* (69th ed.). Wellington, New Zealand: Brookers.

Veal, J., Turner, T., & McAlister, C. (2008). *Staples tax guide* (mid-year ed.). Wellington, New Zealand: Brookers.

### 2. CHAPTERS IN BOOKS

Bowker, N., & Tuffin, K. (2009). Using the online medium for discursive research about people with disabilities. In N. Fielding (Ed.), *Interviewing II* (Vol. 1, pp. 255–271). London: Sage.

Brennan, M. (2009). Caring for infants. In L. Claiborne & W. Drewery (Eds.), *Human development in Aotearoa: Family, place and culture* (3rd ed., pp. 116–117). Sydney, Australia: McGraw-Hill.

Kovacic, Z. (2009). National culture and e-government readiness. In H. Rahman (Ed.), *Handbook of research on e-government readiness for information and service exchange: Utilizing progressive information communication technology*. Hershey, PA: Information Science Reference.

Margrain, V., & Everiss, L. (2009). “Ka pai –well done”: Student teacher perceptions of assessment feedback in distance learning. In L. Meyer, S. Davidson, H. Anderson, R. Fletcher, P. Johnston & M. Rees (Eds.), *Tertiary assessment and higher education student outcomes: Policy, practice & research* (pp. 129–139). Wellington, New Zealand: Ako Aotearoa.

Skinner, C., & Mersham, G. M. (2009). The nature and status of public relations in Africa. In K. Sriramesh & D. Vercic (Eds.), *The handbook of global public relations: Theory, research, and practice* (Vol. 2, pp. 284–311). New York: Routledge.

### 3. BOOK REVIEWS

Fields, A. (2009). Review of the book *Unofficial wisdom: Selected contributions to the Feliciter 1995–2009*, by Guy Robertson. *The New Zealand Library and Information Management Journal*, 51(3), 206–207.

### 4. REFEREED JOURNAL ARTICLES

Abhary, K., Adriansen, H. K., Begovac, F., Kovacic, Z., Shpigelman, C. N., Spuzic, S., & Xing, K. (2009). A contribution to transferability of scientific and engineering concepts. *The International Journal of Knowledge, Culture and Change Management*, 9(5), 93–106.

Barrett, J. (2009). Copyright and commercial slogans. *Web Journal of Current Legal Issues*, 3. Retrieved from <http://webjcli.ncl.ac.uk/2009/issue3/barrett3.html>.

Barrett, J. (2009). The role of legal studies in the business curriculum. *New Zealand Journal of Applied Business Research*, 7(2), 57–67.

Fisher, R. M. (2008). Should we be allowing technology to remove the distance in distance education? *New Zealand Annual Review of Education*, 18, 31–46. Retrieved from [http://ako.aotearoa.ac.nz/resource\\_types/bibliography/literature-review](http://ako.aotearoa.ac.nz/resource_types/bibliography/literature-review)

Kovacic, Z. (2009). National culture and e-government readiness. *International Journal of Information Communication Technologies and Human Development*, 1(2), 77–93.

Malik, A. (2009). Training drivers, competitive strategy and clients' needs: Case studies of three business process outsourcing organisations. *Journal of European Industrial Training*, 33(2), 160–177.

Mersham, G. M. (2009). Reflections on e-learning from a communication perspective. *The Journal of Distance Learning*, 13(1), 51–70.

- Narraway, G., & Cordery, C. (2009). Volunteers: Valuable but invisible to accountants. *Australia, New Zealand Third Sector Review*, 15(1), 11–30.
- Papazova, E., Pencheva, E., Moody, R., Tsuzuki, Y., & Bathurst, J. (2008). Value dimensions of culture: Comparative analysis. *Psychological Thought*, 6, 40–54. <http://www.scribd.com/doc/26050450/VALUE-DIMENSIONS-OF-CULTURE-COMPARATIVE-ANALYSIS>
- Ross, C. (2009). Student diversity in Aotearoa New Zealand: A discourse of deficit. *Journal of Adult Learning Aotearoa New Zealand*, 37(2), 47–51.
- Sahrawat, K. (2009). The role of meditation in the preservation and maintenance of intellectual capital: An empirical study. *International Journal of Global Management Studies Quarterly*, 1(1), 32–59.
- Shaw, R. K. (2009). The phenomenology of democracy. *Policy Futures in Education*, 7(3), 340–348.
- Strongman, L. (2009, June 1). Captain Cook’s voyages and Coleridge’s ‘Rime of the Ancient Mariner’. *Junctures: The Journal for Thematic Dialogue*, 12, 69–81. Retrieved from [http://www.junctures.org/issues.php?issue=12&title=Island&colour=rgb\(41,99,172\)](http://www.junctures.org/issues.php?issue=12&title=Island&colour=rgb(41,99,172))
- Strongman, L. (2009). “When earth and sky almost meet”: The conflict between traditional knowledge and modernity in Polynesian navigation. *Journal of World Anthropology*, 3(2). Retrieved from <http://wings.buffalo.edu/research/anthrogis/JWA/V3N2/Strongman-art.pdf>
- Zepke, N., Leach, L., Anderson, H., Butler, P., Henderson, J., Hoffman, J., Isaacs, P., Ross, C., Russell, B., Slater, G., Solomon, K., Wilson, S., & Wiseley, A. (2009). *Improving student engagement in post-school settings: An annotated bibliography*. Retrieved from <http://ako.aotearoa.ac.nz/ako-aotearoa/ako-aotearoa/resources/pages/improving-student-engagement-post-school-settings-annotate>

## 5. OPEN POLYTECHNIC OF NEW ZEALAND WORKING/OCCASIONAL PAPERS

- Barrett, J. (2009). *Human rights, sustainability and standing: A humanist perspective?* (Working Paper No. 4-09). Lower Hutt, New Zealand: The Open Polytechnic of New Zealand.
- Barrett, J. (Ed.). (2009). *Report on the School of Business symposium on sustainability and business held 3 March 2009*. (Present research) Lower Hutt, New Zealand: The Open Polytechnic of New Zealand. Working Paper Series.
- Bourke, J., & Simpson, O (2009). *Sustainability in education* (Working Paper No. 2-09). Lower Hutt, New Zealand: The Open Polytechnic of New Zealand.
- McNally, B.A. (2009). *Executive leadership in New Zealand: A monocultural construct?* (Working Paper No. 1-09). Lower Hutt, New Zealand: The Open Polytechnic of New Zealand.
- Strongman, L. (2009). *Sustainability: The greening of education in the new millennium*. (Working Paper No. 3-09). Lower Hutt, New Zealand: The Open Polytechnic of New Zealand.

## 6. INTERNATIONAL REFEREED CONFERENCE PAPERS PUBLISHED IN PROCEEDINGS

- Bourke, J., Pajo, K., & Lewis, K. (2009, September). *Start small, stay small: Flexibility, self-employment and work-life balance*. Paper presented at the conference of the Small Enterprise Association of Australia & New Zealand, Massey University, Wellington, New Zealand.
- Brennan, M. (2009, October). *Beyond childcare*. Paper presented at the 10th annual conference of the International Step by Step Association, Bucharest, Romania.
- Chang, A. L. (2009, July). *Can good corporate governance practices improve firms’ financial performance? A survey on the perceptions of CEOs in Malaysia*. Paper presented at the conference of the Accounting and Finance Association of Australia and New Zealand, Adelaide, Australia.

- Coetzer, A., Peter, R. M., & Peter, V. M. (2009, December). *Continuous learning and employee learning processes: The case of New Zealand small manufacturing firms*. Paper presented at the conference of the Australia and New Zealand Academy of Management (ANZAM), Monash University, Melbourne, Australia. Awarded best paper in the Management Education stream.
- Cordery, C., & Narraway, G. (2009). Perspectives on reporting for contributed services. In *Proceedings of the 2009 Conference of the Accounting and Finance Association of Australia and New Zealand* [CD-ROM]. Carlton, Australia: AFAANZ.
- De Costa, G. (2009). Management of coastal surface waters subject to sea water intrusion. In *Proceedings of the 33rd Congress of the International Association for Hydraulic Research* [CD-ROM] (pp. 4686–4693).
- De Costa, G. (2009). Salinity intrusion, its management and control: Future scenarios: Case of the Waiwhetu aquifer. In *Proceedings of the 33rd Congress of the International Association for Hydraulic Research* [CD-ROM] (pp. 3626–3632).
- Fields, A. (2009, September). *Writing your first article: What the publishers really want*. Paper presented at the ALIA National Library and Information Technicians Conference, Adelaide, Australia. Available at <http://conferences.alia.org.au/libtec2009/Documents%20for%20Links/FieldsALIA09.pdf>
- Malik, A. (2009, November–December). *Developing market-based organisational learning capabilities: Case study evidence from three business process outsourcing firms*. Paper presented at the conference of the Australian and New Zealand Marketing Academy, Monash University, Melbourne, Australia.
- Malik, A. (2009, December). *Training decision making in software services firm: Evidence from India*. Paper presented at the 23rd annual conference of the Australian and New Zealand Academy of Management, Monash University, Melbourne, Australia.
- McNally, B. A., & Rutland, P. (2009, September). *The baby or the bath water? Computerised technologies, educational provision and social injustice in New Zealand*. Paper presented at the 13th Cambridge International Conference on Open and Distance Learning, Cambridge University, Cambridge, England.
- McNally, B.A. (2009, December). *An unrecognised power. The influence of folklore on executive leadership*. Paper presented at the 23rd annual conference of the Australian and New Zealand Academy of Management, Monash University, Melbourne, Australia.
- Msimangira, K. A. B., & Tesha, C. (2009, May). *International supply chain practices in developing countries*. Paper presented at the 20th annual conference of the Production and Operations Management Society, Orlando, FL.
- Msimangira, K. A. B. (2009). *Supply chain integration, supplier relationships and order fulfilment practices in public hospitals*. Paper presented at the 20th annual conference of the Conference proceedings of the Production and Operations Management Society, Orlando, FL.
- Peter, V., & Malik, A. (2009, August). *The effect of macroeconomic and environmental factors on the governance of government housing programmes: A comparative study of Housing New Zealand Corporation and Western Australia Department of Housing and Works*. Paper presented at the 4th Annual International Conference on Public Policy and Management, Bangalore, India.
- Rutland, P. (2009, September). *Quality assurance in open and distance learning – Making it work in the digital age*. Paper presented at the 13th Cambridge International Conference on Open and Distance Learning, Cambridge University, Cambridge, England.
- Shneider, E., & Gladkikh, O. (2009, September). *Designing an intelligent question design information system (IQDIS)*. Paper presented at the 35th annual conference of the International Association of Educational Assessment, Brisbane, Australia.
- Strongman, L. (2009, September). *Language and the shadow: Post-structuralism as ontological divorce in Goethe's 'Faust'*. Paper presented at the 1st Global Conference of Villains and Villainy, Oxford University, Oxford, England. Available at: <http://www.inter-disciplinary.net/wp-content/uploads/2009/08/Strongman-paper.pdf>.
- Strongman, L. (2009, September). *Pedagogy with learning management systems: The tertiary educational organisation, the virtual learning environment, the academic and the student in e-learning*. Paper presented at the 12th Cambridge International Conference on Open and Distance Learning, Cambridge University, Cambridge, England.

## 6A. INTERNATIONAL CONFERENCE ACADEMIC PAPERS (ABSTRACT ONLY REFEREED) PUBLISHED IN PROCEEDINGS

- Burtenshaw, M. K. (2009, May–June). *Storage practices and environmental conditions in a contemporary traditional Māori sweet potato subterranean storage pit (rua kūmara) in Aotearoa/New Zealand*. Paper presented at the 50th annual meeting of the Society for Economic Botany. College of Charleston, Charleston, SC.
- Hahn, D. (2009, October). *Reading in a foreign language for academic purposes: A case for the use of language-specific reading strategies*. Paper presentation at the 1st International Conference on Foreign Language Learning and Teaching, The Language Institute of Thammasat University, Bangkok, Thailand.
- McLachlan, K., & Oliver, J. (2009, July). *The impact of psychological flexibility and negative schemas on changes in delusional ideation over time*. Paper presented at the 3rd World Conference of the Association for Contextual Behavioural Sciences, Enschede, The Netherlands.
- Pereda, P. (2009, July). *Participación de mujeres en política: Significado e implicancias para la política Chilena*. Paper presented at the 21st International Political Science Association World Congress of Political Science, Santiago, Chile.
- Ross, C. (2009, July). *"The person who called me was so encouraging – Especially at a time when I was feeling overwhelmed by the requirements of my study."* Peer support for indigenous student engagement, retention and success. Paper presented at the 32nd Annual International Conference of the Higher Education Research and Development Society of Australasia, Darwin, Australia.
- Ross, C. (2009, December). *Engagement for learning: What matters to students, what motivates them and how can institutional support services foster student engagement?* Paper presented at the 2009 Biennial Conference of the Australia and New Zealand Student Services Association, Brisbane, Australia.
- Strongman, L. (2009, February). *The humanities and knowledge creation*. Paper presented at the 35th Australasian Universities Language and Literature Association, The University of Sydney, Australia.
- Strongman, L. (2009, November). *Renaissance linear perspective and the development of modernism*. Paper presented at the Art Association of Australia and New Zealand Conference, The Australian National University, Canberra, Australia.

## 7. NATIONAL CONFERENCE ACADEMIC PAPERS (REFEREED) PUBLISHED IN PROCEEDINGS

- Awan, N. (2009, November). *Costing dynamics in a social enterprise: A case study*. Paper presented at the 3rd New Zealand Management Accounting Conference, University of Canterbury, Christchurch, New Zealand.
- Barrett, J. (2009, September). *In search of silver linings: Business education and the great recession*. Refereed paper presented at the New Zealand Applied Business Education Conference, Rotorua, New Zealand.
- Bowker, N. (2009, September). *Conflict and online community: Are they compatible?* Paper presented at the Teaching and Learning/EFest Conference, Universal College of Learning, Palmerston North, New Zealand.
- McNally, B. A. (2009, September). *Completing the cycle: The issues of social justice arising from e-enhanced delivery of NZ Dip Bus*. Refereed paper presented at the New Zealand Applied Business Education Conference, Rotorua, New Zealand.
- McNally, B.A. (2009, September). *The influence of folklore on CEO leadership*. Paper presented at the Antipodes: New Directions in History and Culture: Aotearoa New Zealand Conference, Victoria University of Wellington, New Zealand.
- Sampson, V., & Bourke, D. (2009, September). *Real-time assessment: Development and implementation of on-line assessment at a NZ polytechnic*. Refereed paper presented at the New Zealand Applied Business Education Conference, Rotorua, New Zealand.
- Scholes, V. (2009, December). *Serving a purpose: Should the ethical conception of society bound the ethical focus of policy decision-making?* Paper presented at the Ethical Foundations of Public Policy conference, Victoria University of Wellington, New Zealand.
- Weaver, N. E., & Peters, H. L. (2009, September). *Rate the New Zealand birds: Applying best practice pedagogy to online activities*. Paper presented at the Teaching and Learning/EFest Conference, Universal College of Learning, Palmerston North, New Zealand.

## 7A. NATIONAL CONFERENCE PRESENTATIONS (ACADEMIC) ABSTRACT ONLY PUBLISHED IN PROCEEDINGS

- Alderson, J. (2009, March). *Reaching out and sharing the journey: Children's centres in the UK*. Paper presented at the 2009 conference of the Early Intervention Association of Aotearoa New Zealand, Auckland, New Zealand.
- Brennan, M., & Everiss, L. (2009, September). *An exploration of field based early childhood teacher education in Aotearoa New Zealand*. Invited paper presented at the New Zealand Council for Educational Research and Ako Aotearoa Tertiary Research Colloquium, Auckland, New Zealand.
- Gilbert, G. (2009, November). *Reconciling difference and the universal: Political space and mediating institutions*. Paper presented at Sociological Association of Aotearoa New Zealand Conference, Massey University, Palmerston North, New Zealand.
- Hunt, M., Peters, H. L., Lie, C., & Harper, D. (2009). *Credit card logos and perceived value*. Paper presented at the 6th annual conference of the New Zealand Association of Behaviour Analysis, Auckland, New Zealand.
- Mersham, G. M. (2009, December). *Researching public relations and communication management from an Aotearoa/New Zealand perspective*. Paper presented at the 21st annual conference of the New Zealand Communication Association, Dunedin, New Zealand.
- Mersham, G. M. (2009). *Using augmented reality technology to render 3-dimensional objects in paper-based course materials to enhance learning for apprentice engineering trade students*. Paper presented at the 21st annual conference of the New Zealand Communication Association, Dunedin, New Zealand.
- Pereda, P. (2009, November). *Negative perceptions of Chilean politics: A possible reason for women's low political representation*. Paper presented at the 2009 annual conference of the Sociological Association of Aotearoa New Zealand, Massey University, Palmerston North, New Zealand.
- Southcombe, K., & Peters, H. L. (2009, August). *Development of a self-directed learning programme on how to implement positive reinforcement with horses*. Paper presented at the 6th annual conference of the New Zealand Association of Behaviour Analysis, University of Auckland, Auckland, New Zealand.
- Wallace, B., Harper, D., Hunt, M., & Peters, H. L. (2009). *Slot machine structural characteristics, the near miss, and sensitivity to reinforcement*. Paper presented at the 6th annual conference of the New Zealand Association of Behaviour Analysis, University of Auckland, Auckland, New Zealand.

## 8. NATIONAL CONFERENCE POSTER PRESENTATIONS

- Cossham, A., & Irvine, J. (2009, October). *Qualifications and job prospects: An evaluation of the impact of library undergraduate degrees and diplomas*. Poster session presented at the annual conference of the Library and Information Association of New Zealand Aotearoa, Christchurch, New Zealand.
- Jarden, A. (2009, August). *Can personal values, hope or grit predict academic success?* Poster session presented at the annual conference of the New Zealand Psychological Society, Palmerston North, New Zealand.

## 8A. INTERNATIONAL CONFERENCE POSTER PRESENTATIONS

- Jarden, A. (June, 2009). *Can personal values, hope and grit predict academic success?* Poster session presented at the First World Congress on Positive Psychology, Philadelphia, PA.

## 9. EXTERNAL RESEARCH GRANTS

- Brown, C., Glaeser, M., Merham, G., & Maathuis-Smith, S. (2009). *Enhancing learning for engineering trade students: Augmented paper based materials in course design*. Proof of concept. Ako Aotearoa Regional Hub Project Funding Scheme.
- Burtenshaw, M. K. (2007–2008). *Māori crop protection*. The New Zealand Institute for Plant and Food Research Limited. Contract to December 2010.
- De Costa, G. (2006–2007). *Assessment and management of change in coastal zones caused by salinity intrusion*. Asia Pacific Network. Project from January 2006 to May 2009.
- Everiss, L., & Brennan, M. (2009). *An exploration of field-based early childhood teacher education in Aotearoa/New Zealand*. Teaching and Learning Research Initiative (TLRI), Ministry of Education.
- Fowler, P. (2009). *Wonderwebbers*. Ako Aotearoa Good Practice Publication Grant.
- Ross, C. (2008–2009). *Facilitated online study skills workshops for first-year students*. Ako Aotearoa Good Practice Publication Grant.
- Ross, C. (2008–2010). *Learning environments and student engagement with learning in tertiary settings*. Collaborative Teaching and Learning Research Initiative (TLRI) funded project with 9 New Zealand tertiary education organisations.
- Williams, N., Broadley, M.-L., & Lawson-Te Aho, K. (2010). *Lawson-Te Aho: Building kaupapa Māori into early childhood education*. Ako Aotearoa National Project Fund.

## 10. POSTGRADUATE THESES

- Jonnvithula, L. (2009). *Improving the interfaces of online discussion forums to enhance learning support*. Unpublished master's thesis, Massey University, New Zealand.
- Malik, A. (2009). *Factors influencing the provision of enterprise training: A study of India's information technology (IT) sector*. Unpublished doctoral thesis, Victoria University of Wellington, New Zealand.
- McNally, B.A. (2009). *The CEO role in New Zealand. Perceptions and interpretative schema: Tensions and paradoxes*. Unpublished doctoral thesis, Victoria University of Wellington, New Zealand.

## 11. RESEARCH GROWTH FUND GRANTS

- Boyd-Wilson, B. (2009). *Development of the self-realization scale (S-R scale)*.
- Chipinduku, G. (2009). *The rhetoric of work-life balance: An analysis of the inconsistencies between policy and practice in New Zealand tertiary organisations*.
- Jarden, A., Jose, P., McClachlan, K., & Simpson, O. (2009). *Well-being study*.
- Peters, H. (2009). *Gambling and stimulus control*.

## 12. COMMISSIONED REPORT FOR EXTERNAL BODY

- Everiss, L. (2009). *Research report on the practices and systems that foster a sense of wellbeing for young children and their families as they transition from home to a 'formal' home-based care and education service*. Wellington, New Zealand: Ministry of Education Centre of Innovation Research Initiative.
- Mudford, O., Blampied, N., Phillips, K., Harper, D., Foster, M., Church, J., Hunt, M., Peters, H., & Wilczynski, S. (2009). *Technical review of published research on applied behaviour analysis interventions for people with autism spectrum disorders: Auckland Uniservices Ltd*. Wellington, New Zealand.

## FACULTY ACADEMIC OUTPUTS

### 13. INTERNATIONAL PRESENTATIONS (NON-REFEREED)

- De Costa, G. (2009, May). *Writing a successful research proposal to APN*. Presentation to the APN proposal development workshop, New York.
- Green, J. (2009, October). *Automatic assessment using Moodle*. Presentation to the Centre for Flexible and Distance Learning, University of the South Pacific, Suva, Fiji.
- Green, J. (2009, October). *Enhanced online learning materials*. Presentation to the Centre for Flexible and Distance Learning, University of the South Pacific, Suva, Fiji.
- Green, J. (2009, October). *Mobile learning via Moodle: A pilot project at the Open Polytechnic*. Presentation to the Centre for Flexible and Distance Learning, University of the South Pacific, Suva, Fiji.
- Green, J. (2009, October). *Reflections in the Yarra: Clanning/MLearn2007*. Presentation to the Centre for Flexible and Distance Learning, University of the South Pacific, Suva, Fiji.
- Green, J. (2009, October). *Second Life: SLENZ Project*. Presentation to the Centre for Flexible and Distance Learning, University of the South Pacific, Suva, Fiji.
- Green, J. (2009, October). *The importance of social presence in online courses*. Presentation to the Centre for Flexible and Distance Learning, University of the South Pacific, Suva, Fiji.
- Karamat, P. (2009, May). *Paradigm shift in information technology and its impacts on risk management*. Presentation to the Department of Information and Decision Sciences, College of Business and Public Administration, California State University, San Bernardino, USA.

### 14. NATIONAL PRESENTATIONS

- Brennan, M. (2009, June). *Socio-cultural theories and early childhood education*. Invited presentation to the Tamaki Makaurau Early Childhood Teacher Education Providers Network, Auckland, New Zealand.
- Brennan, M. (2009, March). *The challenge of whakawhanaungatanga for the early childhood sector*. Invited keynote address to the Kidstart Barnardos Regional Conference, Wellington, New Zealand.
- Brennan, M., & Everiss, L. (2009, September). *An exploration of field-based early childhood teacher in education in Aotearoa*. Ako Aotearoa Colloquium Tertiary Research in Progress, Auckland, New Zealand.

- Cossham, A. (2009, March). *RDA: The new kid on the block*. Paper presented at the LIANZA, CatSIG and National Library RDA Workshops: Dunedin 6 March 2009, Christchurch 5 March 2009, Wellington 13 March 2009. Available at <http://www.natlib.govt.nz/catalogues/library-documents/rda-workshop/>
- Crook, P., & Brown, C. (2009). *Reusable objects, engaging scenarios, involved learners*. Workshop presentation at the Learning and Teaching Conference, Whitireia Community Polytechnic, Porirua, New Zealand.
- Fisher, R. M. (2009, May). *Trade and the environment*. Presentation to the Business & Sustainability Symposium, The Open Polytechnic of New Zealand, Lower Hutt, New Zealand.
- Huelsmann, C. (2009, March). *Symptom validity testing & chronic pain*. Presentation to the Annual Scientific Meeting of the New Zealand Pain Society Conference, Rotorua, New Zealand.
- Huelsmann, C. (2009, March). *Assessment of clinical significance*. Presentation to ACC Clinical Advisor Conference, Wellington.
- Huelsmann, C. (2009, March). *Pain disorder: Diagnostic and conceptual issues*. Presentation to ACC Clinical Advisor Conference, Wellington.
- Jarden, A. (2009, July). *Can values, hope and grit predict academic retention and success?* Presentation to the Ako Aotearoa Winter Seminar Series, Wellington, New Zealand.
- Matehaere-Patten, S. A. (2009, October). *Phone boxes are for time travel, pizza boxes are for education*. Presentation to the Real Estate Institute of New Zealand Property Managers Conference, Wellington, New Zealand.
- Rawlings, C., & Grant, R. (2009, November). *Culturally relevant support for first-year Māori student engagement, retention and success*. Presentation to the Te Toi Taura mo te Matariki Conference, Auckland University, Auckland, New Zealand.
- Welland, S. (2009, July). *It's about you too: Some guidelines for keeping sane in an insane environment*. Keynote presentation at the 2nd annual Records Management Symposium of the Association of Local Government Information Management, Wellington, New Zealand.
- Wellington, S. (2009, October). *A GLAMorous marriage: Models of convergent practice between memory institutions*. Presentation to Victoria University Postgraduate Research Seminar, School of Museum and Heritage Studies, Victoria University of Wellington, Wellington, New Zealand.

## 15. OTHER NATIONAL CONFERENCE PAPERS (NON-REFEREED)

- Everiss, L. (2009, June). *An overview of early childhood education in New Zealand*. Presentation at universities in Beijing, Tianjin, Guilin and Schenzhen, People's Republic of China.
- Strongman, L. (2009, September). Summary presentation, Home Group Two, Cambridge International Conference on Open and Distance Learning, Cambridge University, Cambridge, England.

## 16. NON-REFEREED JOURNAL/MAGAZINE ARTICLES

- Burtenshaw, M., Tawhai, W., Tawhai, T., & Tomlin, T. (2009). Storage practices and environmental conditions in a contemporary rua kūmara at Oamio, Eastern Bay of Plenty. *Archaeology in New Zealand*, 52(4), 230–239.
- McDermott, J. (2009). Post-retirement partnership debts. *The New Zealand Law Journal*, (5), 196–200.
- Wray, S. (2009, October). ITPNZ joint RM collaboration project. *Library Life*, 340, 12–13. Retrieved from <http://www.lianza.org.nz/publications/library-life/articles/2009-10.html>

## 17. INDUSTRY JOURNALS AND MAGAZINES

- Jarden, A. (2009, Autumn). Post-traumatic growth: An introduction and review. *New Zealand Clinical Psychologist*, 15–19.

## 18. INTERNAL SEMINARS

### SEMINARS PRESENTED BY VISITING FELLOWS

- De Raad, M. (2009, January). *Electronic peer review: A large cohort teaching themselves*.
- Goodwin, V. (Visiting scholar from the Open University, UK.) (2009, January). *Struggling talent – Dyslexia in distance tertiary education*.
- Oliver, G. (2009). *Estonia: The importance of libraries and archives*.
- Simpson, O. (Visiting scholar from the Open University, UK.) (2009, March). *Triumphs and disasters (but mostly disasters) in distance education: What lessons may I have learnt?*

## SEMINARS PRESENTED BY STAFF OF THE OPEN POLYTECHNIC

- Barrett, J. (2009, March). *Sustainability, human rights and standing.*
- Barrett, J. (2009, September). *Writing up your results and producing a paper.*
- Bellman, A., & Weaver, N. E. (2009). *EEO part-time workers survey: Presentation of results to Open Polytechnic managers.*
- Bourke, D. (2009, March). *Accounting and sustainability.*
- Bourke, J. (2009, March). *Sustainability in education.*
- Bourke, J. (2009, September). *Elder care and work-life balance.*
- Bowker, N. (2009, June). *Understanding the online experiences of people with disabilities.*
- Bowker, N. (2009, September). *Literature search and review.*
- Bowker, N. (2009, September). *Preparing a research proposal.*
- Bowker, N. (2009, December). *Before Facebook and Second Life, there were chatrooms.*
- Burtenshaw, M. K. (2009, May). *A traditional Māori subterranean storage pit (rua kūmara in Aotearoa/ New Zealand).*
- Burtenshaw, M. K. (2009, September). *Reporting for contract research: A going backward look at applying for research funds.*
- Collins, J., Peters, H. L., & Wellington S. (2009, September). *Course results reporting workshop.*
- Fisher, R. M. (2009, September). *Practice-based research.*
- Fisher, R., Halsey, G., & Cooper, K. (2009, August). *Agricultural water use in New Zealand: should more be done to balance private property rights with greater public interest in a scarce resource.*
- Green, J., & Dyet, J. (2009, May). *Communicating with students.*
- Green, J. (2009, November). *Communicating effectively with students while reducing your workload.*
- Green, J. (2009, December). *SLENZ Project: Virtual midwifery and foundation learning.*
- Halsey, G. (2009, March). *Sustainability and regulation.*
- Jarden, A., & Strongman, L. (2009, April). *Guide to making research grant applications.*
- Kane, K. (2009, September). *Moderation practice.*
- Maathuis-Smith, S. (2009, July, August, September). *Augmenting paper-based course materials.*
- McGrath, T. (2009, November). *Teaching employment relations courses using websites.*
- McNally, B.A. (2009). *Attending a conference for the first time.*
- McNally, B.A. (2009, November). *Completing the cycle: The issues of social justice arising from e-enhanced delivery of NZ Dip Bus.*
- Msimangira, K. (2009, July). *Supply chain integration, supplier commercial relationships, and order fulfillment practices in New Zealand public hospitals.*
- Merrett, M. (2009, September). *The writing-up stage.*
- Mersham, G. (2009, September). *Reflections on e-learning from a communication perspective.*
- Mowles, L. (2009, February). *Assessment principles and practice.*
- Narayanan, V., & Tatineni, V. (2009, November). *Science and the nature of reality.*
- Olivier, G. (2009, April). *Supporting students struggling with English.*
- Peter, V. M. (2009, March). *Sustainability and management.*
- Peter, V. M. (2009, June). *Introduction to using SPSS for qualitative and quantitative methods of research.*
- Peter, V. M. (2009, September). *Gathering and interpretation of data: Applied methods.*
- Peter, V.M. (2009, October). *Environmental factors and governance of government housing programs: Study of Housing New Zealand Corporation (HNZC) and Western Australian Department of Housing and Works (DHW).*
- Peters, H. L., & Weaver, N. E. (2009). *Bridging the distance with online support.*
- Rawlings, C. (2009, June). *Engaging Māori and Pasifika students in their learning.*
- Rawlings, C. (2009, August). *What does our institution look like in our attempt to improve learning outcomes of Māori students?*
- Rawlings, C., & Ross, C. (2009, June). *"The person who called me was so encouraging – especially at a time when I was feeling overwhelmed by the requirements of my study." Peer support for indigenous student engagement, retention and success.*
- Sampson, V. (2009, October). *Real-time assessment: Development and implementation of online assessment at a New Zealand polytechnic.*
- Strongman, L. (2009, March). *Sustainability: Definitions, applications, values, limitations.*
- Watson, C. (2009, March). *The diverse classroom: Working with students presenting a range of learning styles and requirements.*

## 19. NATIONAL AND INTERNATIONAL AWARDS

- Barrett, J. (2008, October). *In search of silver linings: Business education and the Great Recession*. Paper presented at the New Zealand Applied Business Education Conference, Rotorua, New Zealand. Awarded best peer-reviewed paper.
- Coetzer, A., Peter, R. M., Peter, V. M. (2009, December). *Continuous learning and employee learning processes: The case of New Zealand small manufacturing firms*. Paper presented at the conference of the Australia and New Zealand Academy of Management (ANZAM), Monash University, Melbourne, Australia. Awarded best paper in the Management Education stream.

## 20. JOURNAL EDITORSHIPS

- Bourke, D. (2009). Editor, *Estate & Trust Bulletin* (New Zealand Trustees Association). Editor, *Sus It Out* (sustainability newsletter, New Zealand Institute of Chartered Accountants).
- Cossham, A. (2009). Editor, *Catapult* (quarterly newsletter of LIANZA's Cataloguing Special Interest Group). Editorial board, *New Zealand Library and Information Management Journal*.
- Fields, A. (2009). Editor, *New Zealand Library and Information Management Journal*.
- Hamer, J. (2009). Editorial board, *New Zealand Journal of Teachers' Work*.
- Hicks, D. (2009). Associate Editor, *Inside Tourism* (New Zealand tourism industry).
- Irvine, J. R. (2009). Editorial board, *New Zealand Library and Information Management Journal*.
- Kovacic, Z. (2009). Advisory editorial board, *Open Management Journal*. Editor, *Journal of Information Technology Education*. Editor-in-Chief, *International Journal of Information, Knowledge, and Management*. Senior Associate Editor, *Informing Science: The International Journal of an Emerging Transdiscipline*.
- Shaw, R. K. (2009). Editorial board, *Educational Philosophy & Theory* (Journal of the Philosophy of Education Society of Australasia). Editorial board, *Philosophy of Management*.
- Steele, H. (2009). Editorial board, *Journal of Teaching in International Business*.
- Strongman, L. (2009). Associate editor, *Prism: Online Journal of Refereed Public Relations and Communication Research*. Associate editor, *The International Journal of Environmental, Cultural, Economic and Social Sustainability*.

## 21. CONSULTANCIES

- Green, J. (2009). Member of Second Life Education New Zealand (SLENZ) project team.

## 22. EXTERNAL SCHOLARLY AND ACADEMIC CONTRIBUTIONS

- Barrett, J. (2009). Reviewer of article for the *Journal of the Australasian Tax Teachers Association*. Reviewer of article for the *New Zealand Journal of Applied Business Research*. Reviewer of article for the *New Zealand Journal of Tax Law and Policy*. Reviewer of two abstracts for *New Zealand Applied Business Education Conference*.
- Bowker, N. (2009, June). Adviser/reviewer of literature review for PhD thesis (before submission): *An investigation into student help-seeking behaviours in a tertiary institution's learning support centre*, by Protheroe, M., Massey University.
- Brennan, M. (2009). Invited guest lecturer at Victoria University (Master's students). Member of NZQA review panel for National Diploma in Early Childhood Education (Pasifika).
- Broadley, M-E. (2009). Co-convenor of steering committee, Tamaki Makaurau Early Childhood Teacher Education Providers network, Early Childhood Associate Teachers Symposium. Committee member West Auckland ECE Network.
- Broadley, M-E. (2009). Early childhood representative, AUT postgraduate research committee. External moderator, Bachelor of Education (ECE) degree. Comparing and contrasting moderation protocols, principles, and practices across different institutions. Member, New Zealand Association in Research Education Ethics Guidelines working party. Council member, New Zealand Association in Research Education. Peer reviewer for journal articles, *New Zealand Journal of Educational Studies*. Peer reviewer for thesis awards (Rae Munro/Sutton), New Zealand Association in Research Education. Steering member, organising committee for New Zealand Association in Research Education conference. Steering committee member, New Zealand Association in Research Education: Early Childhood Research symposium. Toddler's Day Out. Waitakere Early Childhood Education event.
- Cant, G., Harrison, M., Carrell, P., & Fields, A. (Eds.). (2008). *Proceedings of the 7th trans Tasman rural conference: Changing seasons, changing times*. Nelson, New Zealand.
- Chang, A. (2009). Discussant and reviewer of a paper presented to the conference of the Association of Accounting and Finance Australia and New Zealand, Adelaide, Australia.

- Cossham, A.** (2009). Reviewer of manuscripts submitted to *Information Research* (<http://informationr.net/ir/>). Chair, 'Ngā Ūpoko Tukutuku: Advancing the future', LIANZA Conference He Tangata, He Tangata, He Tangata, Christchurch.
- Everiss, L.** (2009). Institutes of Technology and Polytechnics New Zealand (ITPNZ) representative on Early Education Federation. Member, New Zealand Qualifications Authority working group to review early childhood unit standards, Levels 3–7. Monitor for initial teacher education programme, appointed by Institutes of Technology and Polytechnics Quality and New Zealand Teachers Council.
- Fields, A.** (2009). Peer reviewer for journal articles, *Australian Library Journal*.
- Green, J.** (2009, October). Visiting lecturer, Centre for Flexible and Distance Learning, The University of the South Pacific, Suva, Fiji. Referee for academic paper, the Working Paper Committee.
- Jonnavithula, L.** (2009). Member, board of reviewers, *Journal of Information Technology Education*.
- Kovacic, Z.** (2009). Member, board of reviewers, *Journal of Global Business and Technology*. Member, Informing Science Institute. Member, Working Group 8.4 (E-Business: Multi-disciplinary Research and Practice), International Federation for Information Processing.
- Malik, A.** (2009). Reviewer, 2009 conference, Academy of Human Resource Development, USA. Reviewer, 23rd annual conference, Australian and New Zealand Academy of Management, Monash University, Melbourne.
- McNally, B.A.** (2009). Reviewer of 5 papers, 23rd annual conference, Australian and New Zealand Academy of Management, Monash University, Melbourne. Review of 6 papers, New Zealand Applied Business Education Conference, Rotorua.
- Mersham, G. M.** (2009, October). Guest host, Webinar: E-learning from a communication perspective. 2009 conference, Distance Education Association of New Zealand (DEANZ).
- Msimangira, K. A. B.** (2009). Ad hoc reviewer for two articles, *International Journal of Productivity and Performance Management*, Emerald, UK.
- Pereda, P.** (2009). Discussant, 'Participatory Democracy', 21st World Congress of Political Science, Chile.
- Peters, H. L.** (2009). Peer reviewer for journal articles, *Journal of Gambling Studies*.
- Sampson, V.** (2009). Reviewer, two papers for New Zealand Applied Business Education Conference, Rotorua.
- Shaw, R. K.** (2009). Reviewer, article for *Journal of Philosophy of Management*. Reviewer, 10 articles for *Journal of Educational Philosophy & Theory*.
- Strongman, L.** (2009). Chair: 'E-Life and the Humanities', 35th Australasian Universities Language and Literature Association. The University of Sydney, Australia. Chair, Parallel Session 1. The Cambridge International Conference on Open and Distance Learning. Member of the NZARE Ethics Guidelines working party.
- Tuleasca, I.** (2009). Research project manager, Research Growth Fund Project No: 2007/03 (Rotational Magnetic Fields and Cryogenic Environments). \$27,000.00 over duration of the project (2007–2009). A collaboration between the Open Polytechnic, Massey University at Albany, Auckland, and Magnets New Zealand Ltd. Reviewer, paper for *Sensors Journal*. Reviewer, Massey University master's thesis: *Novel sensor design for detection of dangerous contaminated marine biotoxins*, by Mohd Syaifudin Bin Abdul Rahman.

## 23. OFFICIAL ROLES

- Awan, N.** (2009). Member of the Audit and Finance Committee of the Open Polytechnic Council.
- Barrett, J.** (2009). Chair, Open Polytechnic Research Publication Committee (*ex officio* member, Open Polytechnic Research Committee). Panel member, Open Polytechnic Ethics Committee.
- Bourke, D.** (2006–). Member, New Zealand Institute of Chartered Accountants Sustainability Special Interest Group.
- Burtenshaw, M. K.** (2009). Kohunui Marae representative on Lake Wairarapa Coordinating Committee. Research facilitator, School of Workplace Learning and Development.
- Butcher, P.** (2009). Board member, New Zealand Earthquake Engineering Business Forum. Member, New Zealand Council of Engineering Technology Deans.
- Culver, A.** (2009). Member, National Diploma in Engineering (Mechanical) NDEME Consortium.
- De Costa, G.** (2006–2010). Member, executive committee of International Association of Hydraulic Engineering and Research (IAHR), Asia-Pacific Division (APD). Appointment until December 2010. Co-Chair, Local Organising Committee 17th Congress of the International Association for Hydraulic Research – Asia Pacific Division, February 2010, Auckland University.
- Forman, D.** (2004–). Member, Electrical Workers Registration Board National Moderation Panel. Member, Electrical Workers Registration Board Complaints Assessment Committee (appointment until 2009). Registered RPL Assessor for ETITO 2010. Member, Electrical Workers Licensing Group Complaints Assessment Committee.

Guest, D. (2008–2009). Open Polytechnic representative on Civil Engineering Polytechnic Consortium (ongoing position).

Harris, K. (2009). Member, Hikurangi Working Party on Sustainability in Real Estate.

Kane, K. (2008–). Open Polytechnic representative, NZQA review meetings (Adult Education & Training).

Martin, A. (2005–). Member, Construction Management Industry Training Board.

Matehaere-Patten, S. (2009–2010). Member, Wellington District Committee of the Real Estate Institute of New Zealand.

McNally, B. A. (2009). Review panel member, New Zealand Qualifications Authority. Research facilitator, School of Business.

Morris, L. (2009). Committee member, Sports Turf ITO Core Expert Group (unit standard review); committee member Sports Turf ITO Core Expert Group (qualification review); committee member, Sports Turf ITO Merit Awards Group; member, Training Providers Group developing the New Zealand Sports Turf Industry Strategic Plan, facilitated by the New Zealand Sports Turf Industry Training Organisation.

Munasinghe, J. (2009). Board member, MCLaSS (Multicultural Learning and Support Services). Honorary auditor, United Sri Lanka Association (USLA). Honorary treasurer, Sri Lankan School of Wellington.

Narraway, G. (2006). Member, Wellington Branch Committee, New Zealand Institute of Chartered Accountants.

Needham, J. (2009–). Member, Academic Board of Advanced Business Education Ltd (Abel). Member, Special Interest Panel, New Zealand Institute of Chartered Accountants. Member, Academic Committee, New Zealand Institute of Chartered Accountants.

Sampson, V. (2009). Member, New Zealand Institute of Chartered Accountants, ACA Advisory Committee. National moderator, New Zealand Qualifications Authority, Wellington.

Strongman L. (2009). Research facilitator, School of Information and Social Sciences.

Wilson, K. (2009–). Member of Foundation Educators Forum, developing online community of practice utilising Ako Aotearoa's community forums function. Regional (Te Whananganui-a-Tara) delegate on Te Toi Taura mo te Matariki Tira (Council).

Young, R. (2009). Chair of Research Committee, Open Polytechnic.

## 24. EXTERNAL SEMINARS

Barrett, J. (2009, October). *Sustainability and human rights*. Presentation to New Zealand Institute of Chartered Accountants Sustainability Working Group.

Matthews, C. (2009). *Motivating staff to improve productivity*. Presentation to the Small Business Expo, Wellington, Christchurch and Auckland.

Nash, C. (2009). First Year's Economic Coordinators Forum, Victoria University of Wellington. 14th Annual Australasian Teaching Economics Conference, Brisbane.

Ross, C. (2009, July). *Culturally relevant peer support for Māori and Pasifika student engagement and success*. Presented at the Ako Aotearoa Winter Seminar Series, Wellington, New Zealand.

## 25. EXTERNAL POSTGRADUATE DEGREE EXAMINATIONS

Mersham, G. M. External examiner, PhD thesis: *Businesses' social engagement, public relations and social development: A beyond modernist conceptual model*, by M. K. Burger, Department of Communication Science, University of South Africa.

Mersham, G.M. External examiner, Master's thesis: *Deploying virtualised workforce strategies, a South African readiness assessment*, by W. Wonigkeit, Graduate School of Business Leadership, University of South Africa.

Mersham, G. M. External examiner, Master's thesis: *Effective management of project stakeholders addressing the issue of good practices*, by M. M. Myers, Graduate School of Business Leadership, University of South Africa.

Mersham, G. M. External examiner, Master's thesis: *A study of the relationship between the JSE SRI index and performance of listed South African companies to assess the impact on future CSR initiatives*, by C. N. Ramabulana, Graduate School of Business Leadership, University of South Africa.



**RESEARCH & ACADEMIC OUTPUTS 2009**  
**THE OPEN POLYTECHNIC OF NEW ZEALAND**

Designed and published by the Open Polytechnic of  
New Zealand.

For comment, questions or further information contact  
Corporate Communications 04 914 5229  
or email [leanne.rate@openpolytechnic.ac.nz](mailto:leanne.rate@openpolytechnic.ac.nz)



**Open Polytechnic**  
KURATINI TUWHERA

---

3 Cleary Street • Private Bag 31914  
Lower Hutt 5040 • New Zealand  
Freephone 0508 650 200 • [www.openpolytechnic.ac.nz](http://www.openpolytechnic.ac.nz)

